



BROADLEAF®

specialty & game meats



November 2024

Newsletter for Wholesale Distributors

Australian Wagyu Tomahawk

MS3 | #58900

MS5 | #56078

for more portioned options see page 4



Texas Wild Boar

Live Trapped in the foothills of Southwest Texas, USDA inspected, a rich, nutty, yet unforgettable flavor!

Boar Shoulders BRN

*Top left | Item 31004

Tenderloin

*Top Right | Item 31022



Stew Meat 2 x 5#

*Bottom Right | Item 31019

*also available:

Neck B/O | Item 31022

Leg B/O BRN | Item 31010

Frenched 10 Rib Rack

2-3# size

*Bottom Left | Item 31999

*also available in other sizes

November 1st, 2024 to November 30th, 2024

Index:	Page #
Grass Fed Beef; New Zealand Angus Pure Special Reserve	2
Wagyu Beef; Australian	3
Wagyu Beef; Japanese Wagyu, Australian, Tomahawks	4
Wagyu Beef; Portion Control, Grind Products	5
Bison	6
Bison Portion Control, Grind Products	7
Wild Boar; Texas	8
Kurobuta, Sakura, and Iberico Pork, Suckling/Roasting Pigs	9
Bacon, Goat, Grass Fed NZ Lamb, AUS Marrunga Marble Lamb	10
Poultry (Capon, Ducks, Cornish Hens, Guinea Hens and Poussin)	11
Poultry (Jidori Chicken, Pheasants, Quail and Squab)	12
Rabbit, Alligator, Camel, Turtle, Frog Legs	13
Sausages	14
Glace, Veal Bones, Hot Dogs, Smoked Products, Trimmings	15
Salami, Pates, Mousses, Foie Gras	16
Venison; Farm Raised New Zealand	17
Elk; Farm Raised New Zealand	18
Broadleaf Retail Items Page	19

Let us help you celebrate the holidays with festive feasts! With this month being filled with events, this is the perfect time for gatherings. Fire up your stovetops and ovens for some braised meats: all natural, tender, Australian wagyu short ribs! Cheek meat also available. Don't forget to include grilling up Sanchoku wagyu ribeye roasts and striploins. Grab some butcher's twine! Perhaps slow roasted boar shoulders or neck meat, or lamb shoulders served over some hearty polenta? Pick up some Cervena Venison Tenderloins, Bistro Filets & Denver Leg Steaks, Elk flanks or NY striploins. Consult with your Broadleaf Sales Rep on exciting ideas for potential menu specials, or plot that new menu change.

Don't have time or room to make your own glace or stocks? Leaving pots on overnight can dig into your utilities. *We've got your solution.* Our expertly made grass fed veal, beef glaces are amazing,...and our lobster stocks are out of this world! They are sized to maximize space, provide consistent taste & help save on labor & utilities. Pg 15

Key:

- Red text denotes price change
- Blue prices denote cases can be broken & sold by each
- Green prices denote cases cannot be broken

(#) = Beef Marbling Score (BMS)

A/L = Airline (wing drummette attached)

B/O = Boneless

S/B/O = Semi Boneless

B/I = Bone In

TTS = Trim To Silver

DND = Denuded

BRN = Boneless, Rolled & Netted

H/O = Head On

H/Off = Head Off

HOFO = Head On, Foot On

IVP = Individually Vacuum Packed

S/On = Skin On

S/Off = Skin Off

C/C = Center Cut

MKT = Market Price

B/L = Broadleaf

G/N = Greg Norman

C/R = Chateau Royal

NCS = North Country Smokehouse

G/F = Grimaud Farms

M/P = MacFarlane Pheasants

S/P = Squab Producers

P/P/P = Palmetto Pigeon Plant

A/S = Angel's Salumi

OOS = Currently Out-of-Stock

Returned Product is Subject to a 15% Restocking Fee and all Broken Cases Subject to \$.25/lb. or Piece Case Break Charge

Written Purchase Orders Preferred for Greater Accuracy and Communication

Hours of Operation: 6AM – 4:30PM Monday – Friday

www.broadleafgame.com

Code	Item	FZN	CHD	Code	Item	FZN	CHD
------	------	-----	-----	------	------	-----	-----

ANGUSPURE SPECIAL RESERVE PASTURE RAISED NEW ZEALAND BEEF

**Pasture Raised, Grass Fed, Grass Finished Angus Beef.*

**No Hormones, No Anti-biotics. "Never-Ever"*

**Halal Certified.*

- 58430 Tenderloin, 190, 5 pc, 20# avg
- 58542 Ribeye, B/O 7 rib, lip off, 4 pc, 36# avg
- 58555 Oven Prepared Rib (Tomahawk), 2pc, 30# avg
- 58202 Striploin, 0x1, 4 pc, 32# avg
- 58852 Short Ribs B/O, 2 pc / 8 pk, 48# avg

- 58790 Chuck Short Rib B/O, 2 pc / 18 pk, 40# avg
- 58306 Coulotte, 1/4" trim, 10 pc, 30# avg
- 58704 Sirloin Flap Meat, 8 pc, 48# avg
- 58720 Chuck Tail Flap, 2 pc / 12 pk, 36# avg
- 58368 Tri Tip, 36# avg
- 58724 Flank Steak, 14 pc, 36# avg
- 58304 Top Sirloin, Cap Off, 184B, 6 pc, 30# avg
- 58739 Inside Skirt, Peeled, 11 pc, 33# avg
- 58854 Brisket, Full, 5 pc, 40# avg
- 58714 Flat Iron, 2 pc / 4 pk, 40# avg
- 58161 Top Round, 3 pc, Cap Off (Denuded), 33# avg
- 58703 Chuck Eye Roll, 3 pc, 45# avg
- 58713 Shoulder Clod, 4 pc, 48# avg
- 58715 Chuck Tender, 2 pc / 6 pk, 36# avg
- 58173 Peeled Knuckle, 4 pc, 40# avg
- 58153 Outside Flat, 3 pc, 45# avg
- 58152 Eye of Round, 8 pc, 32# avg
- 33400 Oxtails, 12pc, 34# avg
- 58644 **Pipe Bones, 44# avg**
- 58716 Mixed Bones, 37# avg

FEATURE

58556 Oven Prepared Rib (Export), 4 pc 3-4 rib, 23# avg

58553 Oven Prepared Rib (Export), 2 pc 7 rib, 35# avg

ANGUSPURE SPECIAL RESERVE - PATTIES & GRINDS

- 20142 Ground, 4/2 1/2#
- 20140 Ground, 10x1#
- 20143 Patties 2-1 Round, 10#
- 20144 Patties 3-1 Round, 10#
- 20145 Patties 4-1 Round, 10#



APSR Top Blade | Item# 58714

ANGUSPURE NEW ZEALAND PASTURE RAISED GRASS FED, GRASS FINISHED BEEF. THE FINEST ANGUS GENETICS RAISED ON THE PUREST GRASSLANDS IN THE WORLD. BEEF...THE WAY NATURE INTENDED

ANGUSPURE (A/P) PORTIONED PRODUCTS

- 20548 A/P Coulotte baseball cut
- 20501 A/P Tenderloin Stks, Center Cut 6 oz
- 20502 A/P Tenderloin Stks, Center Cut 8 oz
- 20523 A/P Ribeye Stks, Center Cut 10 oz
- 20524 A/P Ribeye Stks, Center Cut 12 oz
- 20513 A/P NY Strip Stks, Center Cut 10 oz
- 20514 A/P NY Strip Stks, Center Cut 12 oz
- 20552 A/P Flat Iron Stks 8oz
- 20555 A/P Short Rib 7-8 oz, 10# cse
- 20509 AngusPure Tenderloin Tails
- 20543 A/P Top Sirloin Stks, Center Cut 8oz

Code	Item	FZN	CHD	Code	Item	FZN	CHD
------	------	-----	-----	------	------	-----	-----

AUSTRALIAN WAGYU BEEF

- 8208 Tenderloin (3), 190, 5 pc, 28# avg.
- 8239 Tenderloin (4), 190, 5 pc, 30# avg.
- 3826 Tenderloin (5), 190, 5 pc, 30# avg.
- 8207 Strip Loin (3), B/O 1 Rib, Call for Specs
- 8238 Strip Loin (4), B/O 1 Rib, Call for Specs
- 3897 Strip Loin (5+), B/O 1 rib, Call for Specs
- RV8228 Strip Loin (3), B/I 1 rib, 2 pc, 43# avg.
- RV8260 Strip Loin (5+), B/I 1 rib, 2 pc, 43# avg.
- RV8217 Rib eye (3), B/O 7 rib, lip off, Call for Specs
- 8248 Rib eye (4), B/O 7 rib, lip off, Call for Specs
- RV3861 Rib eye (5+), B/O 7 Rib lip off, Call for Specs
- 8218 Short Ribs B/O (3), 2 pc / 5 pk, 18# avg.
- 3845 Outside Skirts (3) Peeled, 2 pc / 5 pk, 21# avg.
- 8210 Flank Steaks (3), 10 pc, 24# avg.
- 8241 Flank Steaks (4), 10 pc, 24# avg.
- 8296 Flank Steaks (5), 10 pc, 24# avg.
- 8215 Chuck Ribs B/O (3), 2 pc / 5 pk, 33# avg.
- 8214 Chuck Tail Flap (3), 2 pc / 5 pk, 30# avg.
- 3848 Hanging Tenders, 10 pc, 25 # avg.
- 8200 Top Round Cap Off (3), 3/15#
- SB8213 Chuck Eye Roll (3), 2/15#
- 8203 Peeled Knuckle (3), 4/10#
- RV3814 Cheek Meat (3), Call for Specs
- 8212 Top Blade, Flat Iron (3), 5pc, 31# avg.
- 8205 Coulotte (3), 184D, Call for Specs, 30# avg.
- 8236 Coulotte (4), 184D, Call for Specs, 30# avg.
- 8262 Coulotte (5), 184D, 10pc, 30# avg.
- 8206 Tri Tips (3), 2 pc / 5 pk, 30# avg.
- 8237 Tri Tips (4), 2 pc / 5 pk, 30# avg.
- 8294 Tri Tips (5), 2 pc / 5 pk, 30# avg.
- 8209 Sirloin Flap Meat (3), 5 pc, 30# avg.
- RV8240 Sirloin Flap Meat (4), 5 pc, 30# avg.
- 8204 Top Sirloin (3), Cap Off, 184B, 4 pc, 40# avg.
- 8235 Top Sirloin (4), Cap Off, 184B, 4 pc, 40# avg.
- RV8261 Top Sirloin (5+), Cap Off, 184B, 4 pc, 35# avg.
- 8920 Back Ribs (4/5) , 2 pc / 6 pk 42# avg.
- RV8213 Chuck Roll (3) 2/19#



Wagyu Ribeye B/O, lip off, MS3 | Item# 8217

AUSTRALIAN WAGYU BEEF *A CUT ABOVE*

- SB6203 Tenderloin (6/7), 190, Call for Specs
- RV3801 Tenderloin (7), 190, Call for Specs
- SB6202 Strip Loin (6/7), B/O 1 rib, Call for Specs
- RV3865 Strip Loin (7+), B/O 1 rib, Call for Specs
- SB6201 Rib eye (6/7), B/O 7 Rib lip off, Call for Specs
- RV3869 Rib eye (7+), B/O 7 Rib lip off, Call for Specs
- SB6204 Shortloin (6/7), B/I 1 rib, Call for Specs
- SB8260 Top Sirloin (6/7), Cap Off, 184B, 4 pc, 40# avg.
- RV8276 Top Sirloin (7), Cap Off, 184B, Call for Specs
- SB3408 Tenderloin (8/9), 190, Call for Specs
- RV8286 Tenderloin (9), 190, Call for Specs
- SB1408 Strip Loin (8/9), B/O 1 rib, Call for Specs
- RV3817 Strip Loin (9), B/O 1 rib, Call for Specs
- SB2408 Rib eye (8/9), B/O 7 Rib lip off, Call for Specs
- RV3802 Rib eye (9), B/O 7 Rib lip off, Call for Specs
- SB4408 Shortloin (8/9), B/I 1 rib, Call for Specs
- RV8304 Top Sirloin (9), Cap Off, 184B, Call for Specs
- 8222 Full Brisket (3), 1 pc / 2 pk, 35# avg.
- 59939 Wagyu Steamship Round *call for availability/specs

NEW FEATURE

Code	Item	FZN	CHD
------	------	-----	-----

JAPANESE WAGYU BEEF

- 99970 Tenderloin A5 (8-10), 2 pc, 16# avg.
- 99971 Tenderloin A5+ (10-12), 2 pc, 16# avg.
- 99999 Strip Loin A5 (8-10), 2 pc, 26# avg.
- 99998 Striploin A5+ (10-12), 2 pc, 26# avg.
- 99948 Rib eye A5 (8-10), 2 pc, 26# avg.
- 99949 Rib eye A5+ (10-12), 2 pc, 26# avg.

WAGYU BEEF - PATTIES & GRINDS

- 58970 Patties 10oz Round, 10#
- 58992 Patties 2-1 Round, 10#
- 58962 Patties 6oz Round, 11.25#
- 58993 Patties 3-1 Round, 10#
- 58994 Patties 4-1 Round, 10#
- 58902 Patties 8-1 Round, bulk pack, 10#
- 58999 Ground, 4/2½#
- 58998 Ground, 10/1#

RIBEYE TOMAHAWK CHOPS

- 56032 Wagyu Rib eye B/I Tomahawk stk (3+) approx 36-40oz, 2/2pk, 9-11#
- 58900 Wagyu Rib eye B/I Tomahawk stk (3+) approx 30-32oz, 2/2pk, 8-10#
- 58901 Wagyu Rib eye B/I Tomahawk stk (3+) approx 26-28oz, 2/2pk, 7-8#
- 56031 Wagyu Rib eye B/I Tomahawk stk (3+) IVP 30oz, 4pc, 8-10#
- 56030 Wagyu Rib eye B/I Tomahawk stk (3+) IVP 26-28oz, 4pc, 7-8#
- 56078 Wagyu Rib eye B/I Tomahawk stk (5) approx 30oz, 2/2pk, 8-10#
- 56079 Wagyu Rib eye B/I Tomahawk stk (5) approx 28oz, 2/2pk, 8-10#
- 20530 AngusPure Special Reserve Rib eye B/I Tomahawk stk approx 26-28oz, 2/2pk, approx 6#
- 20531 AngusPure Special Reserve Rib eye B/I Tomahawk stk 28-30oz Tomahawk, 8# avg.



Japanese Wagyu Tenderloin A5+
Item # 99971

Wagyu Beef Patties
Legendary Flavor.



Wagyu Patties 2-1
Item# 58992

Code Item

FZN

CHD

WAGYU BEEF - PORTIONED PRODUCTS

- 58971 Tenderloin stk (3) 8 oz, 12 pc
- 57875 Tenderloin stk (5) 8oz, 12 pc
- 58972 Tenderloin Tournedo 2-3oz
- 58973 Tenderloin Tails (3), 10#
- 57934 Ribeye Sandwich stk (3+), 10#
- 57935 Ribeye Sandwich Stks, (3+), 10/1#
- 51127 Coulotte "Sushi" Log (3+) 21-23oz, 6 pc
- 58903 Coulotte "Baseball" stk (3+) 8-9oz, 10#
- 58913 Coulotte stk (3+) 8-9oz, 12 pc
- 51117 Top Sirloin Filet Log (3+) 8pc, 10#
- 58919 Top Sirloin C/C stk (3+) 8oz, IVP, 15 pc
- 58923 Top Sirloin stk (3+) 4oz, IVP, 10#
- 57867 Top Sirloin C/C stk (6+) 8oz, 15 pc
- 51454 NY Strip Filet C/C stk (3) 8oz, 12 pc
- 57802 NY Strip Filet C/C stk (5) 8oz, 12 pc
- 58986 NY Strip C/C stk (3) 10oz, 12 pc
- 58988 NY Strip C/C stk (3) 12oz, 12 pc
- 58934 NY Strip sandwich stk (3+), 10#
- 58889 NY Strip vein end roast (3+), 10#
- 57800 NY Strip stk C/C (5) 8oz, 12 pc
- 57810 NY Strip stk C/C (5) 10oz, 12 pc
- 57820 NY Strip stk C/C (5) 12oz, 12 pc
- 58896 Porterhouse stk (3) 24oz, 6 pc
- 58866 T-Bone stk (3) 16oz, 10 pc
- 50625 Bone In NY Strip C/C stk (3) 17-18oz, 8 pc
- 58927 Flat Iron stk (3), 8oz, 10#
- 52122 Steak Ready Flat Iron (3), 10#
- 58938 Kabob Meat (Diced), 10# (by-product)
- 58940 Stew Meat (Diced), 10# (by-product)

GREG NORMAN SIGNATURE WAGYU - PORTIONED PRODUCTS

- 55637 Patties 2-1 Round, 10#
- 55639 Patties 8-1 Round, bulk pack, 10#
- 55638 Ground, 4/2½#
- 58969 Hot Dog (skinless) 6 inch 4-1, 2/5#

Wagyu Beef

BMS 6+ Top Sirloin

Center Cut Steak



Wagyu Beef BMS 6+ Top Sirloin Steaks bring a high marble score to the table at an affordable price. Experience the flavor and tenderness of this 300+ day grain fed & finished Wagyu Beef.

Wagyu Beef Top Sirloin 8 oz. BMS 6+ | Item 57867

Code Item

FZN

CHD

BISON

* Free Range and All Natural.

* Humanely Raised & USDA Inspected

* Lower Fat, Calories, and Cholesterol than Beef, Chicken or Ostrich.

24269 Tenderloin 190, 5/5# up, 30# avg.

24366 Tenderloin 189A, 3-4/5# avg.

24426 Tomahawk Rack

24246 Rib Eye, 3 pc, 31# avg.

24212 Export Ribs, 30# avg.

24232 NY Strip Loin, 3 pc, 18# avg., 0 x 1 Vein Out

24272 Top Sirloin, 3 pc, 30# avg.

24276 Tri Tips (USDA), Call for Specs

24219 Flank Steaks, Call for Specs

24257 Short Ribs, B/I, 30# avg.

24264 Hanging Tenders, 28# avg.

24263 Top Rounds, 4 pc, 60# avg.

24223 Eye of Round, 8 pc, 46# avg.

24202 Bottom Flats, 4 pc, 65# avg.

24057 Steamship Rounds, 1/55# avg. *Special Order*

24215 Shoulder Clods, Call for Specs (USDA)

24204 Briskets, 4 pc, 28# avg.

24209 Chuck Eye Roll, Call for Specs

24260 Oxtails, 30# avg.

24292 Back Ribs, 25# avg.

24099 Liver, 30# avg.

24214 Teres Major 5 pk, 5 pc/pk, 25# avg.

24256 Skirt Steak (outside) 3 pk, 7 pc/pk, 30# avg.

BISON - PORTIONED PRODUCTS

24149 Tomahawk Rib Chop 20-28oz/14 pc IVP

24049 Rib Eye Stk 10oz, 10#

24050 Rib Eye Stk 12oz, 10#

24028 NY Strip Stk 10oz, 10#

24029 NY Strip Stk 12oz, 10#

24071 Top Sirloin Stk 8oz, 10#

24072 Top Sirloin Stk 10oz, 10#

24073 Top Sirloin Stk 12oz, 10#

24093 Tenderloin Tails, 10# avg.

24032 Osso Bucco 1 inch, 20# avg.

24059 Stew Meat (Diced), 2/5#



Experience an American
Classic, straight from the
ol' Frontier



Bison Tenderloin 189A | Item 24269

Our North American Bison are raised sustainably, without the use of antibiotics or growth hormones, and are fed a vegetarian diet of grasses and grains.

All Prices Listed are FOB Los Angeles and are Subject to Change at Any Time

Phone: 800-336-3844 Fax: 323-826-9830

Code Item

FZN

Code Item

FZN



North American Bison Strip Steak | Available in 8oz, 10oz, 12oz & Retail



North American Bison Ribeyes 12oz item #24050

BISON GROUND AND PATTIES

- 24025 Ground, 4/2½#
- 24016 Ground, 10x1#
- 24034 Patties 2-1 Round, 10#
- 24037 Patties 3-1 Round, 10#
- 24039 Patties 4-1 Round, 10#
- 24042 Patties 8-1 Round, 10#
- 24134 w/Beef Patties 2-1 Round, 10#
- 24043 w/Beef Patties 3-1 Round, 10#
- 24136 w/Beef Patties 4-1 Round, 10#
- 24026 w/Beef ground 4/2.5#

RETAIL BISON PRODUCTS

- 24082 Rib Eye Stk Boxed, 6/2x5oz
- 24080 NY Strip Stk Boxed, 6/2x7oz
- 24077 Top Sirloin Stk Boxed, 6/2x8oz
- 24085 Patties 4-1 Round Boxed, 6/4x4oz
- 24000 Ground, 10/1#
- 24081 Jerky Black Pepper, 2oz - [price per pack](#)
- 24083 Jerky Black Pepper, 4oz - [price per pack](#)



Bison Patties 2-1
Item# 24034

Code	Item	FZN	Code	Item	FZN
------	------	-----	------	------	-----

BROADLEAF TEXAS WILD BOAR

* *Wild Caught in Texas.*

* *Free Range with No Added Hormones, Steroids, or Antibiotics.*

* *All Natural, Lean and Exceptionally Flavorful.*

31050 3.5oz Tenderloins, 2 pc/14 pk, 9# avg.

31022 Tenderloins, 13# avg.

31021 B/O Loins TTS, 1.5# up, 45# avg.

31998 Frenched 10 Rib Rack 3-4# avg., 2 pc/ 2pk, 12# avg.

31999 Frenched 10 Rib Rack 2-3# avg., 2 pc/2 pk, 13# avg.

31013 Frenched 10 Rib Rack 1-2# avg., 4 pc/2 pk, 14# avg.

31051 Saddle B/I, 29# avg.

31053 Loin NY Strip B/O, DND, 20# avg.

31004 Shoulder BRN, 25# avg.

31010 Wild Boar Leg, BRN, 20# avg.

31009 Leg B/I, 48# avg.

31111 Leg B/I Steamship, 45# avg.

31132 Neck Meat B/O, 22# avg.

31015 Shanks B/I, 40# avg.

31056 Wild Boar Volcano Shank, Call for Specs

31101 Baby Back Ribs, 18# avg.

31220 St. Louis Ribs, 15# avg.

31023 Wild Boar Trim, 44# avg.

31125 Lace Fat, 10# avg.

31003 Bones, 23# avg.

31124 Fat, 40# avg.

WILD BOAR - PORTIONED PRODUCTS & GRINDS

31044 Loin Medallions 4oz, 10#

31045 Loin Medallions 6oz, 10#

31046 Loin Medallions 8oz, 10#

31011 Leg Medallions 4oz, 10#

31005 Loin Chops B/I 4-6oz

31006 Loin Chops B/I 6-8oz

31007 Loin Chops B/I 8-10oz

31019 Stew Meat (Diced), 2/5#

31008 Ground, 4/2.5#

31108 Ground, 10/1#

31039 Patties 2-1 Round, 10#

31107 Patties 3-1 Round, 10#

31012 Osso Bucco, 2 inch, 10#



WHOLE WILD BOAR, HEAD OFF. SKIN OFF

Please allow for one week lead time while in season

31302 Whole Boar, H/Off, 20-29#

31303 Whole Boar, H/Off, 30-39#

31304 Whole Boar, H/Off, 40-49#

31305 Whole Boar, H/Off, 50-59#

MOSSY OAK NEW ITEM

71222 Wild Boar Chorizo (5 x 2#)

Code	Item	FZN	CHD	Code	Item	FZN
------	------	-----	-----	------	------	-----

- CERTIFIED BERKSHIRE PORK (AKA KUROBUTA)**
- 33222 Tenderloin 415, 10 pc, 12# avg. (Heritage)
 - 33203 8 Bone Frenched Rack, 5 pc, 30# avg. (Heritage)
 - 33204 8 Bone Rack, cap on, chine off, 5 pc, 30# avg. (Heritage)
 - 33504 8 Bone Rack, cap off, chine off, 5 pc, 33# avg. (Berkrigde)
 - 33217 Loin C/C B/O, 35# avg.
 - 33246 Loin NY Strip B/O, vein end off, 4 pc, 16# avg.
 - 33216 Full Loin B/I 410, 4 pc, 68# avg.
 - 33720 St. Louis Ribs, 25# avg.
 - 33205 Bellies B/O S/Off 1 Rib, 4 pc, 40# avg. (Heritage)
 - 33705 Bellies B/O S/Off 1 Rib, 5 pc, 50# avg. (Berkrigde)
 - 33724 Cheek Meat, 2 pc, 10# avg. (Berkrigde)
 - 33708 Boston Butt B/O, 52# avg. (Berkrigde)
 - 33208 Boston Butt B/O, 45# avg. (Heritage)
 - 33707 Boston Butt B/I 406, 73# avg. (Berkrigde)
 - 33235 Steamship Round 2 pc 36# avg.
 - 33238 Shoulder Ribs 30# avg.
 - 33213 Hind Shanks 22oz, 34# avg.
 - 33242 Loin C/C B/I Chops 12oz, 10#
 - 33048 Porterhouse Chop 12 oz. 10#
 - 33221 Fore Shank Osso Bucco, 18-20oz, 38# avg.
 - 33212 Ground 4/5#
 - 33262 Country Style breakfast saus. w/Sage 8-1 (16/1#)
 - 33263 Kurobuta Bratwurst 4-1 (16/1#)
 - 33264 Kickin' Kurobuta spicy 4-1 (16/1#)

- SAKURA DUROC PORK**
- 33322 Tenderloin 415, 10 pc, 12# avg.
 - 33120 Rib Chop 12 oz. 10#
 - 33304 8 Bone Rack C/Off, 4 pc, 41# avg.
 - 33305 Pork Belly 1 Rib, 4 pc cse, 39# avg.
 - 33317 Boneless C/C Loin, 50# avg.

- SUCKLING / ROASTING PIGS**
- 35002 Whole Pig Head On, Under 20#
 - 35003 Whole Pig Head On, 1/20-29#
 - 35004 Whole Pig Head On, 1/30-39#
 - 35005 Whole Pig Head On, 1/40-49#
 - 35006 Whole Pig Head On, 1/50-59#
 - 35016 Whole Pig Head On, 1/60-69#
 - 35009 Whole Pig Head On, 1/90-120#
 - 35010 Whole Pig Head On, 1/120+#

Kurobuta Pork

This outrageously juicy pork breed originated in Berkshire England. In the 19th century England gave a shipment of these hogs as a gift to Japanese diplomats and called them "Kurobuta" meaning black pig



Kurobuta Belly B/O Skin Off
Item# 33205
Cap on, Chime off, 5pc, 30# cs avg



- IBERICO PORK**
- 33600 Secreto (shoulder blade), 8 pc, 21# avg. Limited
 - 33601 Pluma (flank), 10 pc, 23# avg. Limited
 - 33602 Presa (shoulder steak), 9-12 pc, 20# avg.
 - 33603 Solomillo (tenderloin), 22lb avg cse wgt
 - 33608 Carre (rack of Iberico), 4 pc, 14# avg.
 - 33630 Belly Secreto, 14 pc avg, 10# avg.
 - 33605 Costilla (spare ribs), 4 pc, 18# avg.
 - 33607 Pancetta (belly, skin off), 5 pc, 20# avg.

Code	Item	FZN	CHD	Code	Item	FZN	CHD
------	------	-----	-----	------	------	-----	-----

BACON
 30032 Nueske's Applewood Smkd Sliced 10-12ct, 2x5#
 30029 Nueske's Applewood Smkd Sliced 12-14ct, 10#
 30035 Nueske's Applewood Smkd Sliced 16-20ct, 2x5#
 30040 Nueske's Applewood Smkd Slab, 1/12-14#
 30036 Nueske's Canadian Bacon, Half-Loin, 2/2.5#
 30021 NCS Bacon Ends and Pieces
 31025 Wild Boar Slab, 2/5#
 30016 Wild Boar Sliced (retail w/labels), 10/1#
 30017 Wild Boar Ends and Pieces (3/8" cubes)
 30010 Kurobuta Slab
 30011 Kurobuta Sliced, 15/1#
 30060 Irish Cured Rashers Bacon, 20/1#
 50011 Wagyu Beef Bacon Slab (2 x 4#)

GOAT
 69722 6-8 Way cut up, Halal Certified (35# avg.)

MARRUNGA MARBLE LAMB *Halal Certified

Broadleaf is proud to source Australian Marrunga Marble Lamb. An evolutionary and unique 90 day barley fed, offering the finest marbled lamb. A subtle flavor showcasing a refined dining experience.



MM4756 Lamb Rack Frenched 8-Rib Cap ON, 18pc, 40# avg
 MM4764 Lamb Rack Frenched 8-Rib Cap OFF, 18pc, 45# avg
 MM4805 Lamb Leg Bone In Chump Off ABO, 6pc, 30# avg
 MM4880 Lamb Shortloin Split 3" Tail, 30#avg
 MM4883 Lamb Shortloin Saddle 1" Tail, 40# avg
 MM4995 Lamb Shoulder Banjo Cut, 5pc, 35# avg
 MM5015 Lamb Spare Ribs, 12pk, 30# avg
 MM5030 Lamb Foreshank, 10/2pk, 35# avg
 MM5031 Lamb Hindshank, 16/2k, 35# avg
 MM5050 Lamb Shoulder BRN, 10pc, 45# avg
 MM5070 Lamb Leg B/O Chump/Shank OFF, 6pc, 50# avg
 MM5130 Lamb Chump Cap ON, 10/2pk, 40# avg
 MM5140 Lamb Striploin Cap ON, 12/4pk, 48# avg

NEW ZEALAND PASTURE RAISED LAMB
**Family Farmed Free Range, Grass Fed Lamb, Never confined to a feedlot*
**No Added Hormones - Ever *Subprimals Halal Certified*
 65214 Long Leg, Whole, Bone In, 40# avg.
 65244 **Short Cut Leg, Bone In, Chump Off, CKT**
 65262 Leg, EZ Carve, Bone In, 6/5#
 65252 Leg, Boneless (Tunnel Bone)
 65233 Top Sirloin, Cap Off
 65582 Tenderloin
 65543 *Frenched 12-14oz Racks, 14/2pk*
 65544 *Frenched 14-16oz Racks, 12/2pk*
 65545 *Frenched 16-18oz Racks, 12/2pk*
 65548 *Frenched 18-20oz Racks, 12/2pk*
 65549 *Frenched 20-22oz Racks, 10/2pk*
 65586 Loins 6-10oz, 30# avg.
 65723 Oyster Cut Shoulder, Bone In, Shank off (Banjo)
 65705 Shoulder, Boneless, Rolled, Netted, 46# avg.
 65824 Hind Shanks 16-18oz, 24# avg.
 65804 Fore Shanks 12oz+, 31# avg.
 14037 Stew Meat, 2x5#

PATTIES AND GRINDS *Halal Certified*

16034 Ground Lamb, 4 x 2.5#
 16014 Ground Lamb, 10 x 1#
 16006 Patties 2-1 Round, 10#
 16000 Patties 3-1 Round, 10#
 16005 Patties 4-1 Round, 10#
 16026 Patties 8-1 Round, bulk pack, 10#



Code Item

FZN

CHD

POULTRY

- 60003 Capon Whole 6/7-9#
 94004 Geese Whole 5/8-10 lb
 94005 Geese Whole 4/10-12 lb
 64150 B/L ABF All Natural Pekin Duck Breasts, 6-7oz
 64151 B/L ABF All Natural Pekin Duck Breasts, 7-8oz
 64152 B/L ABF All Natural Pekin Duck Breasts, 8-10oz
 64153 B/L ABF All Natural Whole Pekin Duck, 6/4-4.5#
 64154 B/L ABF All Natural Whole Pekin Duck, 6/4.5-5#
 64155 B/L ABF All Natural Pekin Confit Legs 8/2pk
 64156 B/L ABF All Natural Pekin Legs, 35# avg.
 64158 B/L ABF All Natural Pekin Ground, 6/2#
 64052 Pekin Duck Liver, 2 x 20#
 64001 Pekin Duck Bones, 30# avg.
 64121 Moulard Duck Brst B/O, 28-32oz
 64032 Muscovy Duck Hen, 8/4# avg.
 64031 Muscovy Duck Hen Brst, 20/16oz
 64030 Musc Duck Drake Double Brst S/On, 10/30oz
 64035 Retail Muscovy Duck Drake Brst, 10 pc, 10# avg.
 64056 Muscovy Drake Duck Wings, 40lb cse
 64046 Muscovy Drake Leg, 6/9pk, 45# avg.
 64050 Muscovy Hen Leg, 30# avg.
 64036 Retail Muscovy Duck Hen Leg, 10# avg.
 64160 Rendered Duck Fat Pail 7#
 64008 H/V Rendered Duck Fat Large Pail, 7.5#
 64009 H/V Rendered Duck Fat Small Pail, 1.75#
 95014 Guinea Hen, 8/3-3½# (G/F) *New Feature
 95114 Guinea Hen 6/2.75-3 1/2# (J/F) *New Feature
 95002 Guinea Hen Legs B/I, 6/12pk (G/F)
 66007 Partridge Chukar, HOFO, 20 pc, 15-19oz
 69027 Poussin, Whole 20/15-17oz (PPP)
 69026 Poussin, Whole 16/19-22oz (PPP)
 69011 Poussin S/B/O, 6x2/16-18oz (PPP)
 69012 Poussin S/B/O 6x2/13-15oz (PPP)
 69021 Poussin, Whole Poulet Rouge 12/16-20 oz
 62143 Poulet Rouge Whole Chicken 6/3.0-3.5# *New Feature
 63104 Cornish Game Hens S/B/O, 16/14-16oz
 63106 Cornish Game Hens S/B/O, 16/10-12oz

Duck Breast Moulard b/o skin on | Item# 64121



Geese Whole 8-10lb | Item# 94004



Code Item

FZN

CHD

POULTRY CONTINUED

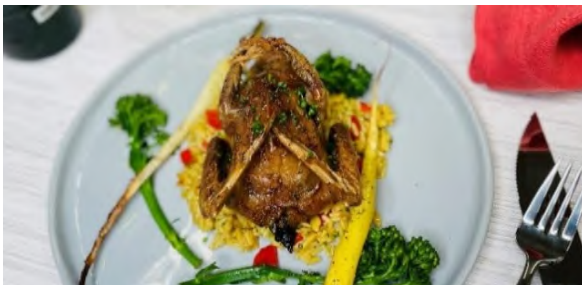
- 62069 Jidori Chicken *GMO Free* Whole, 12/2.5-3#
- 62070 Jidori Chicken *GMO Free* Whole, 10/3-3.5#
- 62074 Jidori Chicken *GMO Free* A/L Brst, 8-10oz/24pc, 15# avg.
- 62073 Jidori Chicken *GMO Free* A/L Brst, 10-12oz/24pc, 15# avg.
- 62176 Jidori Chicken Breast B/O S/Off 7oz 24pc/cs
- 62179 Jidori Chicken Thigh B/O S/Off, 1x 10#
- 62187 Jidori Chicken Party Wings, 1x 10#
- 68413 Pheasant Whole, 9/2½-3# (MDWP)
- 68214 Pheasant Whole, 8/3-3½# (M/P)
- 68415 Pheasant Whole, 7/3½-4# (MDWP)
- 68411 Pheasant Brst B/O S/On, 8-10oz, 11/4pk (MDWP)
- 68403 Pheasant A/L Brst, 6-8oz, 14/4pk (MDWP)
- 68404 Pheasant A/L Brst, 8-10oz, 11/4pk (MDWP)
- 68408 Pheasant Thighs B/O S/Off, 5/5# (M/P)
- 68405 Pheasant Legs 5/8 pc
- 61029 Quail Jumbo Whole, 5-6oz, 6/4pk (TXQ)
- 61028 Quail Jumbo S/B/O, 4-5oz, 6/4pk (TXQ)
- 61002 Quail Manchester S/B/O, 24pc, 6/4pk
- 61003 Quail S/B/O, 9/4pk (Plantation)
- 61009 Quail Whole, 6/6pk (Plantation)
- 61013 Quail Brst B/O, Medallions, 4.25# avg, 9/6pk
- 90010 Squab Whole, 24/16oz (P/P/P)
- 90029 Squab Whole, 12/13-15oz (S/P)
- 90030 Squab Whole 12/15-17oz (S/P)
- 90014 Squab S/B/O, 16/10-12oz (PPP)
- 90105 Squab B/O Brst, 24/2x3-4oz Dbl
- 90007 Squab Whole HOFO, 24/15-16oz (PPP)



Plantation Quail SBO 3.5oz 9/4pk #61003



Jidori A/L Breast 8-10oz | Item# 62074



Squab Whole 15-17oz | Item# 90030

Code	Item	FZN	CHD	Code	Item	FZN	CHD
------	------	-----	-----	------	------	-----	-----

- 65001 Fan Fillets *Call for Specs*
- 65014 Tenderloin *Call for Specs*
- 65003 Inside Strips *Call for Specs*
- 65024 Outside Strip *Call for Specs*
- 65027 Oyster 1-1.25# - call for specs
- 65030 Pearl steak 10-12 oz *call for Specs*
- 65016 Trim *call for Specs*
- 65012 Steaks 8oz, 10# cse
- 65010 Steaks 4-6oz, 10# cse
- 65000 Ground, 10/1# cse *Ltd Inventory*

ALLIGATOR - DOMESTIC

- 10017 Tenderloin, 7/5# avg.
- 10003 Sirloin Tail Meat, 12/1# avg. cse
- 10002 Sirloin, 8/5# avg.
- 10005 Leg & Body (trim), *Call for Specs*
- 10006 Whole Alligator *Call for Specs*

CAMEL - AUSTRALIAN

- 80001 Trim, Boneless, 44# avg. cse *call for availability*
- 80091 Ground, 10/1# cse *call for availability*
- 80003 Striploin, 49# avg cse *call for availability*
- 80004 Ribeye, 48# avg cse *call for availability*
- 80002 Tenderloin, 60# avg cse *call for availability*

FROG *Please call ahead for inventory levels*

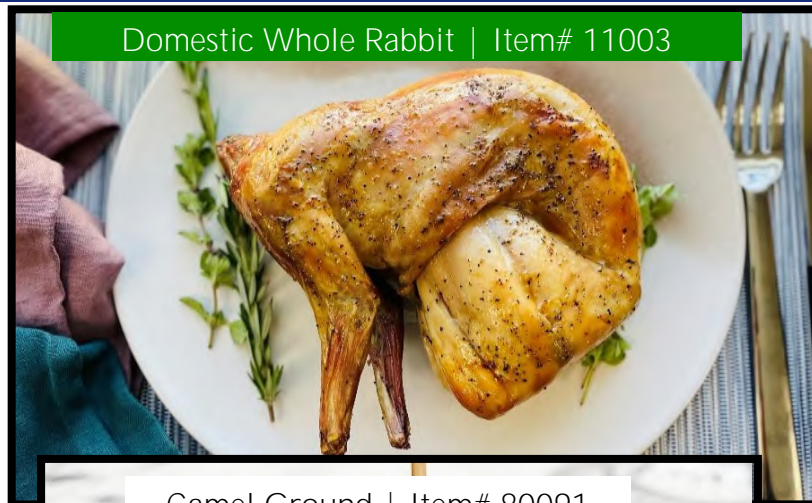
- 93001 Frog Legs 6-8 (sets/lb), 6/5# cse
- 93000 Frog Legs 4-6 (sets/lb), 6/5# cse
- 93002 Frog Legs 2-4 (sets/lb), 6/5# cse

TURTLE

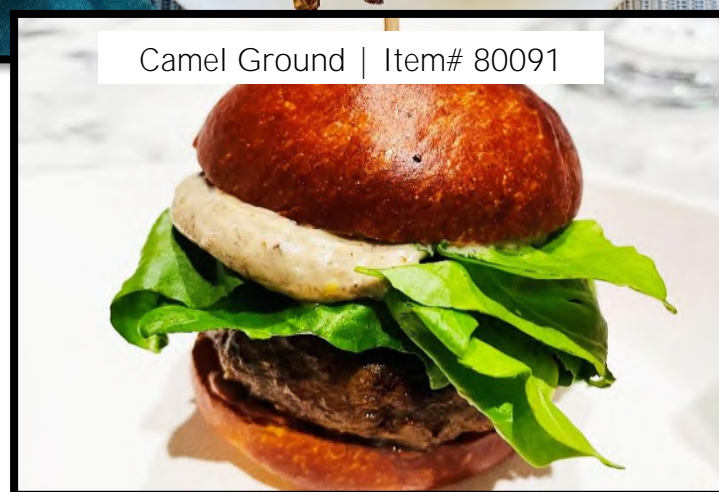
- 13003 Boneless, 10/5# cse

IBERICO RABBIT

- 11303 Whole Fryers (10/2.5-3.0#) SPAIN
- 11305 Rabbit Legs Imported (2/4.4#) SPAIN
- 11312 Striploin B/O (3/2.2#) (Eye of Loin) SPAIN
- 11316 Ground 2 x 5# SPAIN
- 11315 Rabbit Burger 5 oz (10/2 pc) SPAIN



Domestic Whole Rabbit | Item# 11003




Camel Ground | Item# 80091

RABBIT

- 11003 Whole Domestic Fryers, 6/2½-3#
- 11005 Hind Legs B/I, 12# avg. USA
- 11008 Saddles B/I, 15# avg. USA
- 11403 Whole Imported Fryer (6 pc) ITALY
- 11405 Hind Legs B/I,(6/4 PK) ITALY
- 11409 Rabbit Saddles B/O (6/3 pc) ITALY
- 11412 Rabbit Striploin B/O (6/1.8#) ITALY
- 11410 Trim, (2/10#) ITALY
- 11028 Whole Imported Fryers (7 pc) HUNGARY

All Prices Listed are FOB Los Angeles and are Subject to Change at Any Time

Code	Item	FZN	Code	Item	FZN
SAUSAGES BISON					
71016	B/L Bison Southwestern 4-1, 10/1#				
71026	C/R Smoked Bison w/Red Wine 5-1, 12/12oz				
71027	C/R Bison w/Chipotle Chillies 5-1, 12/12oz				
SAUSAGES CHICKEN					
71023	B/L Chicken Jalapeno 4-1, 10/1#				
71019	Chicken Apple Breakfast 10-1, 9/1#				
71020	C/R Chicken Basil & Sun-Dried Tom 5-1, 12/12oz				
71028	C/R Chicken w/Apple & Cran 5-1, 12/12oz				
71095	B/L Smoked Chicken Andouille 4-1, 10/1#				
SAUSAGES DUCK					
71038	B/L Duck w/Bacon 4-1, 10/1#				
71036	C/R Smoked Duck w/Apple Brandy 5-1, 12/12oz, 9#				
71030	C/R Duck w/Orange 5-1, 12/12oz, 9#				
SAUSAGES ELK AND VENISON					
71031	C/R Elk w/Madeira Wine 5-1, 12/12oz, 9#				
71160	C/R Elk w/Apple, Pear, Port Wine 5-1, 12/12oz, 9#				
71054	C/R Venison 5-1, 12/12oz, 9#				
71056	C/R Smoked Venison w/Port Wine 5-1, 12/12oz, 9#				
71037	C/R Venison w/ Merlot & Blueberry 5-1, 12/12oz, 9#				
71159	C/R Venison w/Red Wine/Demi Glace, 12/12oz, 9#				
71226	B/L Venison w/ Pork 5-1, 10/1#				
71033	C/R Smoked Elk w/Bacon & Cheese 5-1, 9#				
SAUSAGES LAMB					
71042	B/L Lamb w/Apple & Garlic 4-1, 10/1#				
71043	B/L Lamb Italian 4-1, 10/1#				
71032	C/R Lamb Merguez 5-1, 12/12oz, 9#				
71163	C/R Lamb w/Oregano, Garlic, White Wine 6 in, 3.6oz, 9#				
SAUSAGES PHEASANT					
71034	C/R Pheasant w/Brandy 5-1, 12/12oz, 9#				
SAUSAGES PORK					
71051	B/L Pork British Bangers 8-1, 10/1#				
71050	C/R Pork Andouille 5-1, 12/12oz, 9#				
33264	Berkshire Kickin' Kurobuta 4-1				
					
SAUSAGES WILD BOAR					
71002	C/R Boar Bratwurst 5-1, 12/12oz, 9#				
71025	C/R Boar w/Cranberries 5-1, 12/12oz, 9#				
71158	C/R Boar w/Garlic & Marsala 5-1, 12/12oz, 9#				
71003	C/R Boar Andouille 4-1, 12/1#				
71005	C/R Boar Italian 4-1, 12/1#				
71113	B/L Smoked Boar Bratwurst 4-1, 10/1#				
71114	B/L Smoked Boar Hot Link 4-1, 10/1#				
71115	B/L Smoked Boar Cheddar Jalapenowurst 4-1, 10/1#				
71157	C/R Boar with Three Chillies 5-1, 12/12oz, 9#				
OTHER SPECIALTY SAUSAGES					
71103	B/L Smoked Alligator Andouille 4-1, 10/1#				
71073	Smoked Turkey Maple B/Fast 8-1, 5#				
71035	C/R Rabbit with White Wine 5-1, 12/12oz				
71044	Smoked Linguica 3-1, 5#				
71010	Boudin Noir (Blood) 4-1, 10/1#				
71009	Boudin Blanc 4-1, 10/1#				
71135	Saucisson a l'ail, (Pork) Garlic large, 12/1½#				

Code	Item	FZN	CHD	Code	Item	FZN	CHD
------	------	-----	-----	------	------	-----	-----

HOT DOGS
 58968 Wagyu Beef 2-1, approx 12 inch, 2/5#
 58964 Wagyu Beef 3-1, 8 inch, 2/5#
 58969 G/N Wagyu Skinless 6 inch 4-1, 2/5#
 58984 Wagyu Beef 5-1 RETL, 6/8pc, 1.6#pk
 58990 Wagyu Beef 5-1 6 inch, 2/5#
 57960 Wagyu Beef 16-1, 2/5#
 58960 Wagyu Beef 32-1, 10/1#

SAUSAGE MAKERS SECTION
 64113 Moulard Duck Meat, #40 avg. (Trim)
 97030 Elk Trim, 60# avg.
 65792 NZ Lamb Trim, 65% CL, 60# avg.
 65794 NZ Lamb Trim, 70% CL, 60# avg.
 65793 NZ Lamb Trim 75% CL, 60# avg.
 65796 NZ Lamb Trim, 80% CL 60# avg.
 97091 Venison "B" Trim, 60# avg.
 97009 Venison "C" Trim, 60# avg.
 31023 Wild Boar Trim, 44# avg.
 58643 AngusPure Grass Fed Trim 65% C/L, 60# avg.
 58624 AngusPure Grass Fed Trim 80% C/L, 60# avg.
 58606 AngusPure Grass Fed Trim 90% C/L, 60# avg.
 31124 Wild Boar Fat, call for specs
 24075 Bison Lean Trim, 90% VL
 11410 Rabbit Trim (2/10#) ITALY
 32001 Pork Casing 35/38
 15120 Australian Lamb Trim 75CL

VEAL BONES - NZ
 27004 Bobby Bones - Femur Cut, 44#

SMOKED PRODUCTS
 64038 B/L Duck Breast, 24-28oz, 12# avg.
 64039 B/L Duck Prosciutto, 12-16oz, 10# avg.
 62017 **Chicken Breast, 2/8x10-12oz**
 32006 B/L Ham Tasso, 10# avg.
 34209 Berkshire Ham B/O, Cooked Halves, 4/7.5#
 34028 Ham Virginia, 2/15-17# (Cured, uncooked)
 34018 Nueske Ham bnls smoked (2 x 6-9#)
 34019 Nueske Ham B/I Glazed Sprial 1/2 Ham (2 pc)

BROADLEAF STOCKS AND GLACES

26070 Lobster Stock, 4 x 8#
 26072 100% Veal Glace 4 x 5#



Code	Item	FZN	CHD	Code	Item	FZN	CHD
------	------	-----	-----	------	------	-----	-----

ANGEL'S SALUMI

- 67103 Venison & Berkshire Pork Salami, 6 x 5.5oz
- 67104 *Black Truffle Le Perigord Salami*, 6 x 6.5 oz
- 67114 Black Truffle Le Perigord SLICED, 12 x 3oz
- 67107 Duck Salami, 6 x 5.5oz
- 34102 Duck Prosciutto, 6 x 10oz
- 31060 Wild Boar Salami 6 x 5.5oz
- 31160 Wild Boar Salami SLICED, 12 x 3oz
- 34103 Wild Boar Prosciutto, 1 x 2.5#

HEYWOODS PROVISIONS

- 14105 Lamb Pepperoni, 3/2pk
- 50012 Nduja Wagyu, 17 x 8.8oz

FABRIQUE DELICES

SAUSAGES

- 71121 Saucisson Sec (French Style Dry), 8/10-12oz
- 71122 Chorizo d'España (Spanish Style Dry), 10/1#
- 71135 Saucisson a l'ail, (Pork) Garlic large, 12/1½#
- 71123 Chorizo Sausage, 10/1#

TRADITIONAL PATES, MOUSSES

- 67012 Goose Supreme w/Sauternes-Pork Free, 2/3½#
- 67013 Pheasant Terrine w/Figs & Pistachios, 2/3½#
- 67021 Truffle Mousse (Chicken), 2/3½#
- 67002 De Campagne w/Black Pepper (Pork), 2/3½#
- 67018 Venison Pate w/ Apricots & Hazelnuts, 2/3½#
- 67006 Duck Mousse w/ Port Wine, 2/3½#
- 67010 Forestier Pate w/ Porcini & Garlic (Pork)



Black Truffle Le Perigord Salami
Item #67104



All year Round! Wagyu Corned Brisket
6pc cs/30#avg cs Item# 57350

BROADLEAF DELI ITEMS

- 57260 B/L Wagyu Pastrami, 2 pc
- 57350 B/L Wagyu Raw Corned Brisket, 6 pc
- 57353 B/L Wagyu Raw Corned Eye Round, 4/6.5# Avg.
- 57348 B/L Grass Fed Corned Brisket, 6 pc
- 57355 B/L Wagyu Corned Bottom Round, 6 pc
- 57256 B/L Wagyu Bresaola Sliced, 4oz - Retail per pk.
- 57255 B/L Wagyu Bresaola Slab, 10# case

FOIE GRAS (ONLY AVAILABLE OUTSIDE CALIFORNIA)

- 92001 Duck Foie Gras A Hudson
- 92002 Duck Foie Gras B Hudson
- 92003 Duck Foie Gras C Hudson
- 92004 Duck Foie Gras A Sliced 2oz/pc, 16pc/pk
- 92118 Duck Foie Gras A Sliced 2oz/pc, 3/2#pk
- 92016 Duck Foie Gras Hudson Cubes, 1# avg.
- 92017 Duck Foie Gras Hudson Terrine, 1.3#
- 92024 Duck Foie Gras Hudson Torchon 16oz

71029 C/R Duck Sausage w/ Foie Gras 5-1, 12/12oz, 9#

Code	Item	FZN	CHD	Code	Item	FZN	CHD
------	------	-----	-----	------	------	-----	-----

Venison Medallions 8oz | Item# 48986



BROADLEAF CERVENA VENISON (RED DEER)

- 42006 Saddle, B/I, 2-3/11-17#
- 43064 Tenderloin, 10/2pk, 12# avg.
- 42126 NY Strip Loin, TTS 8-10/ 1 1/2-2#
- 43016 Strip Loin Full TTS, 12/4 1/2-5 1/2#
- 42086 Frenched 8 Rib Rack, 10/2-2 1/2#
- 42026 Frenched 2 Rib Rack, 20/2pk, 1#pk
- 45034 Denver Leg B/O, 2/5#
- 45013 Leg De-skinned Muscle Set, B/O, 10# avg.
- 44010 Leg B/I, 2/20# avg.
- 51002 Flank Steaks, 13# avg.
- 85255 Bistro Fillet
- 96032 Venison Jerky Shoulder Muscles DND
- 97032 Jerky Leg/Loin Muscles DND
- 85142 Bottom Round Cap On, 41# avg.
- 44013 B/I Leg , Femur Bone only

BROADLEAF CERVENA VENISON (RED DEER) | CONTINUED

- 96046 Shoulder B/O BRN, approx 6/4#+
- 96078 Shoulder B/O BRN, approx 6-10/pc, 2#+
- 45051 Bones, 26# avg.
- 96079 Venison Shoulder B/O, shank on, 44# avg.
- 82008 Venison Hearts
- 82010 Venison Livers
- 97018 B/I Hindshanks, 42# avg.

BROADLEAF VENISON (RED DEER)

- 48988 Medallions 4oz, 10#
- 48987 Medallions 6oz, 10#
- 48986 Medallions 8oz, 10#
- 48994 Loin Chops B/I 10-12oz
- 48997 Rib Chops B/I 10-12oz
- 48996 Rib Chops B/I 8-10oz
- 48933 Osso Bucco Hind Shank, 3 inch, 10#
- 48984 Osso Bucco Fore Shank, 3 inch, 10#
- 48990 Ground, 4/2.5#
- 48991 Ground, 10/1#
- 48982 Patties 2-1 Round, 10#
- 48981 Patties 3-1 Round, 10#
- 48980 Patties 4-1 Round, 10#
- 46135 Stew Meat (Diced), 2/5#
- 48979 Stew Meat (Diced), 10/1#
- 48957 Venison w/Beef Ground, 10/1#
- 48963 Venison w/Beef Stew, 2/5#

RETAIL VENISON PRODUCTS

- 48948 Medallions Boxed, 6/3x4oz
- 48943 Stir-Fry Boxed, 6/1#
- 48900 Venison Ground, 10/1#
- 48940 Patties Boxed, 6/4x4oz
- 48972 Jerky Black Pepper, 2oz
- 48970 Jerky Black Pepper, 4oz

Code	Item	FZN	CHD
BROADLEAF CERVENA ELK / WAPITI X			
42007	Saddle B/I (Split), 2/20# avg.		
42165	Shortloin Saddle B/I, 3/10# avg.		
43025	Tenderloin, 8/2pk, 16# avg.		
43017	NY Strip Loin, DND, 8/1½-2#		
43056	Strip Loin Full TTS, 9/4-5#		
42052	Frenched 8 Rib Rack, 8/2½-3#		
42027	Frenched 2 Rib Rack, 20/2pk, 1#pk		
45028	Denver Leg B/O, 2/5# avg.		
45068	Leg De-Skinned Muscle Set, B/O, 10# avg.		
41002	Flank Steaks, 15# avg.		
96060	Shoulder Jerky Steaks, 48# avg.		
85162	Bottom Round Cap On, 41# avg.		
96047	Shoulder B/O BRN, 42# avg.		
97060	Elk Steak / Jerky Ready Leg Portions		
95318	Elk Bottom Round denuded (limited volume)		

BROADLEAF ELK / WAPITI X			
49991	Medallions 4oz, 10#		
49990	Medallions 6oz, 10#		
49989	Medallions 8oz, 10#		
49995	Loin Chops B/I 8-10oz		
49998	Loin Chops B/I 10-12oz		
49962	Osso Bucco Hind Shank 2 inch, 10#		
49993	Ground, 4/2.5#		
49994	Ground, 10/1#		
49900	Ground, 10/1# Retail		
49988	Patties 2-1 Round, 10#		
49987	Patties 3-1 Round, 10#		
49986	Patties 4-1 Round, 10#		
46136	Stew Meat (Diced), 2/5#		
49983	Stew Meat (Diced), 10/1#		

RETAIL ELK PRODUCTS			
49981	Jerky Black Pepper, 2oz		
49979	Jerky Black Pepper, 4oz		

New Zealand Farm Raised Venison

New Zealand farm raised and grass fed Venison gives a hint of rustic elegance to any menu. Rich yet subtle in flavor, these fabulous menu items range from tenderloins for center of plate presentation to Denver Legs B/O, portion controlled chops and medallions and ground items for out-of-the box burger plates.



Code Item

FZN

BROADLEAF RETAIL GROUND, PATTIES & HOT DOGS

- 24000 Bison Ground, 10/1#
- 24085 Bison Patties 4-1 Round, 6/4x4oz
- 49900 Elk Ground, 10/1#
- 48945 Venison Ground, 6/1#
- 48900 Venison Ground, 10/1#
- 48940 Venison Ground Patties 6/4x4oz
- 31000 Wild Boar Ground, 10/1#
- 20100 Grass Fed Beef Ground 10/1#
- 58984 Wagyu Beef Hot Dog 5-1, 6/8pc (1.6#pk)

BROADLEAF RETAIL STEAKS

- 24082 Bison Ribeye Stk Boxed, 6/2x5oz, price per pack
- 24080 Bison NY Strip Stk Boxed, 6/2x7oz, price per pack
- 24077 Bison Top Sirloin Stk, Boxed, 6/2x8oz, price per pack
- 48948 Venison Medallions Boxed, 6/3x4oz, [price per pack](#)
- 48943 Venison Stir-Fry Boxed, 6/1#, [price per pack](#)

BROADLEAF RETAIL POULTRY

- 64035 Muscovy Duck Drake Breast, 10pc

BROADLEAF RETAIL JERKY

- 24081 Bison Jerky, Black Pepper, 2oz, [price per pack](#)
- 24083 Bison Jerky, Black Pepper, 4oz, [price per pack](#)
- 48972 Venison Jerky, Black Pepper, 2oz, [price per pack](#)
- 48970 Venison Jerky, Black Pepper, 4oz, [price per pack](#)
- 49981 Elk Jerky, Black Pepper, 2oz, [price per pack](#)
- 49979 Elk Jerky, Black Pepper, 4oz, [price per pack](#)

CURED

- 57256 Wagyu Beef Bresaola, Sliced, 4oz, [price per pack](#)
- 30016 Wild Boar Sliced Bacon, 10/1#
- 57350 Raw Wagyu Corned Brisket, 6 pc, 30# avg case

UNLESS NOTED OTHERWISE, ALL PRICES ON THIS PAGE ARE PER POUND

Retail Wagyu Hot Dog | Item# 58984

Shake Up Your Retail Game

Bison Ground, 10/1# Item 24000	Wild Boar Ground, 10/1# Item 31000	VENISON GROUND, 10/1# Item 48900	Grass Fed Beef Ground 10/1# Item 20100
-----------------------------------	---------------------------------------	-------------------------------------	---

BROADLEAF
specialty & game meats

CHATEAU ROYALE RETAIL SAUSAGE

- 71027 Bison Chipotle 5-1, 12/12oz
- 71034 Pheasant Brandy 5-1, 12/12oz
- 71037 Venison Merlot 5-1, 12/12oz
- 71025 Wild Boar Cranberry 5-1, 12/12oz
- 71032 C/R Lamb Merguez 5-1, 12/12oz, 9#



Lamb New Zealand *Halal Certified*

100% All Natural,
Grass Fed, ABF
Pasture Raised
on New Zealand
Farms

Lamb Shoulders

*Top Left | Item 65723

Lamb Tenderloin

*Top Right | Item 65582

Lamb Hindshanks

*Bottom Right | Item 65824

Lamb Loin

*Bottom Left | Item 65586

Other Lamb Cuts Available
Lamb Patties & Grinds Available



BROADLEAF
specialty & game meats



BROADLEAF[®]
specialty & game meats

APSR Striploins 0 x 1

Item# 58202

4pc/cs, 32lb cs avg
***portioned steaks available**

#20513 C/C 10oz

#20514 C/C 12oz



**AngusPure New Zealand pasture raised grass fed, grass finished beef.
The finest Angus genetics raised on the purest grasslands in the world.
Beef...the way nature intended.**



BROADLEAF®
specialty & game meats



100% Pasture Raised on New Zealand Farms
All Natural, Venison Frenched 8 Rib Rack
Item #42086
10pc case/2-2.5# per pc





FYI, Wild Game ground meat tacos are the antidote for menu fatigue. We're partial to the three examples above, left to right: Ground Wild Boar, Ground Venison & Ground Elk. Try Some! Your customers will thank you later.



Ground Wild Boar, 4/2.5lbs | Item 31008 Ground Venison 4/2.5lbs | Item 48990 Ground Elk 4/2.5lbs | Item 49993



Portioned NY Steaks MS3

- 10oz C/C Item#58986
- 12oz C/C Item#58988
- 8oz NY Filet Item#51454
- End to End 1" Steaks Item#51433



Premium Australian Wagyu
 Crossbred with the finest Japanese Genetics
 Grain Fed, minimum 350 days

Portioned Flat Iron Steaks MS3

- 6oz Item #58928
- 7oz Item #58924
- 8oz Item #58927
- 10oz Item #58926